






1112/43 Shoreline Drive Rhodes NSW

2  2  1 

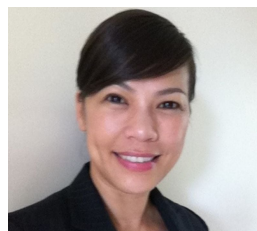
This sensational two-bedroom apartment located in the most sought after the Phoenix Building with sensation water and district views, gives you peaceful and modern life style of living.

Price : Sold

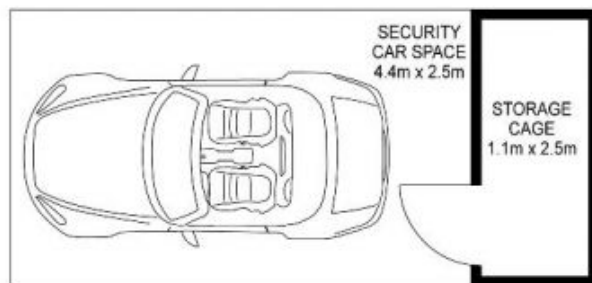
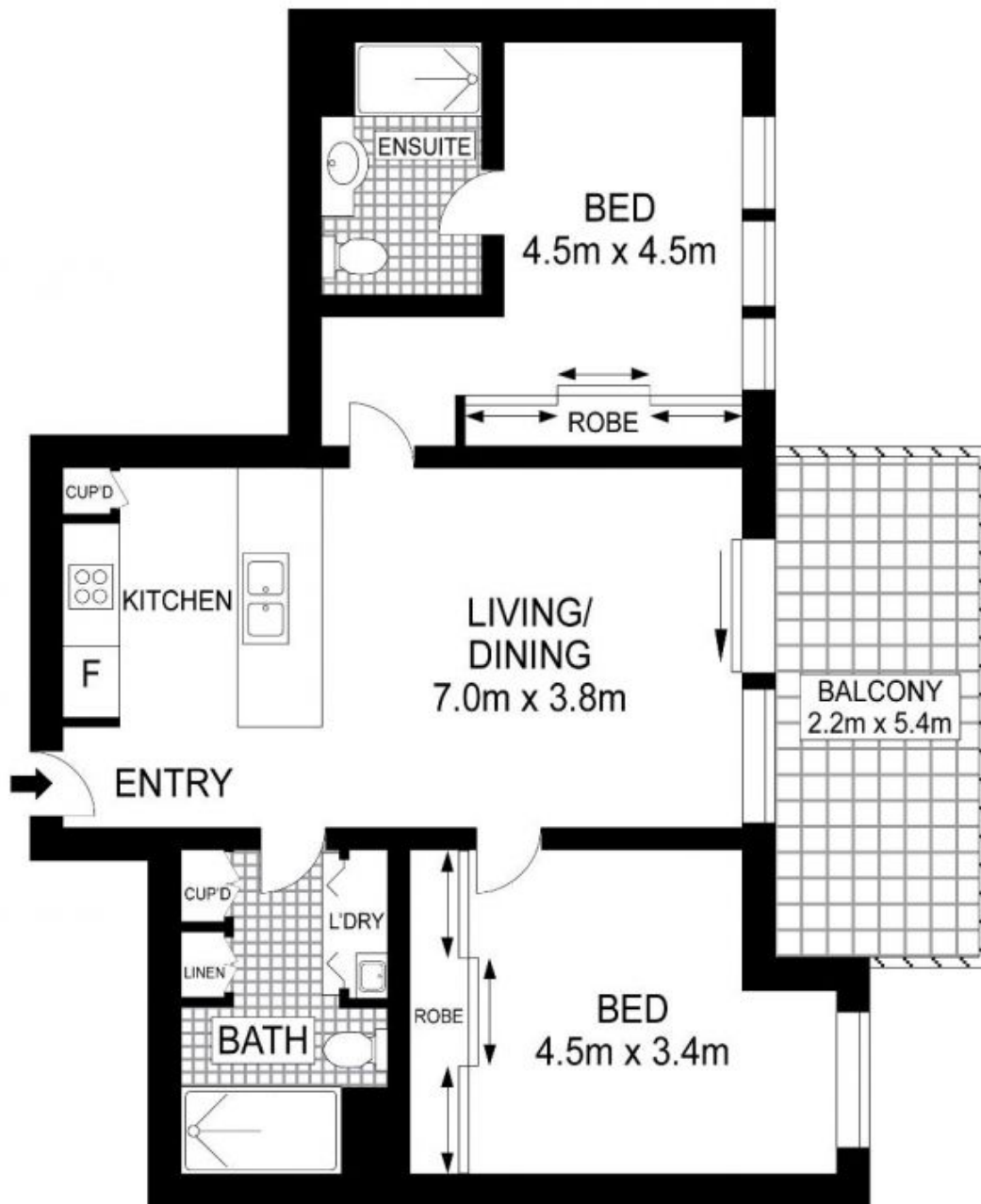
View : <https://www.property-square.com.au/sale/nsw/inner-west/rhodes/residential/unit/5882305>

Feature of the property:

- Open plan living and dining flows to a large balcony for entertaining ease
- Caesar stone benches kitchen with gas cook-top & European appliances
- Spacious two bedrooms all with built-in
- Modern bathroom, master with ensuite
- Split air-conditioning, secure intercom, one car space with a storage.
- Only 5 mins walk to the train station, moment walk to the shopping center and stroll to the waterfront, gym, park and all other



Susan Chiu
02 9113 0888



Scale in metres. Indicative only. Dimensions are approximate. All information contained herein is gathered from sources we believe to be reliable. However we cannot guarantee its accuracy and interested persons should rely on their own enquiries.

1112/43 Shoreline Drive, Rhodes