



321/420 Pitt Street Sydney NSW

3  2  1 

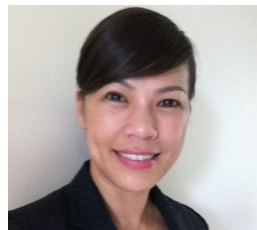
This magnificent split-levels 3 bedroom sub-penthouse apartment offers over 135sqm of living space, enjoy convenient lifestyle in Central Sydney City location - The Mosaic Building.

Land Size : 186 sqm

View : <https://www.property-square.com.au/lease/nsw/sydney-city/sydney/residential/apartment/5882410>

Features:

- * 3 spacious bedrooms + study with built-in wardrobes
- * 2 bathrooms, main with ensuite + guest powder room
- * Total Area: 186sqm + car space
- * Open plan living spaces leading to a Large terrace
- * Remarkable outdoor terraces with panoramic views overlooking Botany Bay and Parkland.
- * Quality kitchen with Stone benches and stainless steel appliances
- * Reverse-cycle Air conditioning, security intercom access
- * Fully equipped gym and one security car space
- * Modern entry foyer with concierge



Susan Chiu
02 9113 0888

3 BED MAISONETTE

1 APARTMENT OF THIS STYLE

APARTMENT 321

INTERNAL AREA = 147m²

TERRACE AREA = 39m²

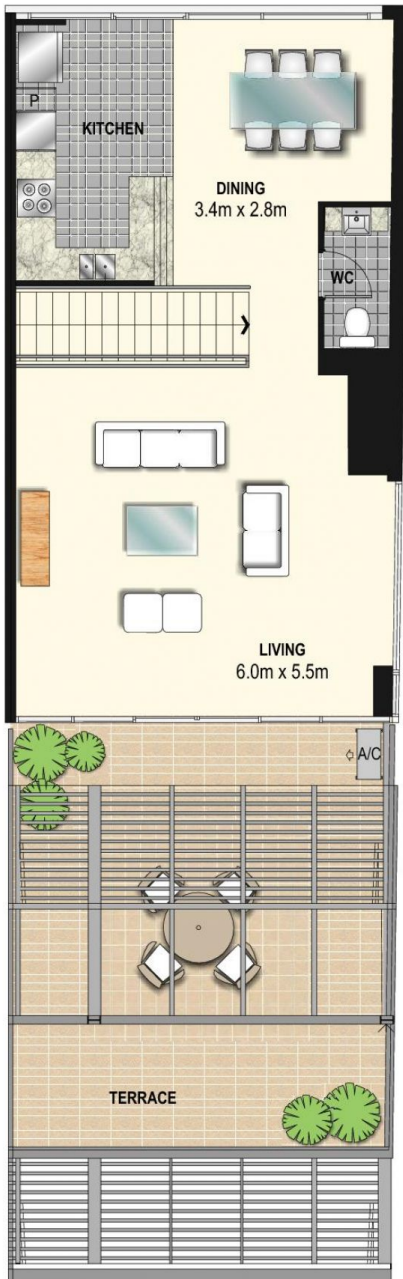
TOTAL AREA = 186m² + CARSPACE

LEVELS 32 - 33

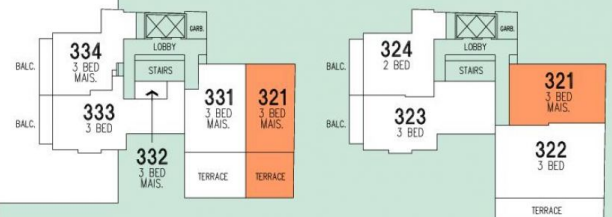
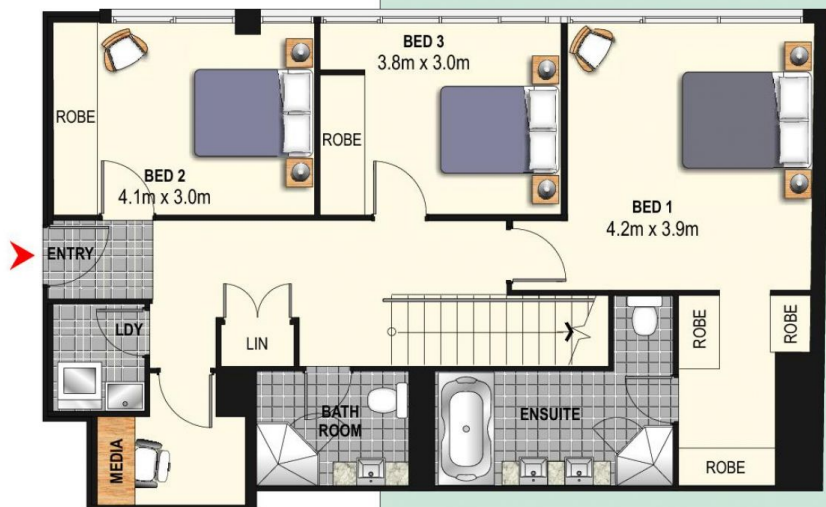


MERITON

presents



- Stunning three bedroom maisonette
- Master bedroom with walk-in robe and ensuite
- Additional bedrooms with built-in robe
- Large internal laundry
- Media/study alcove
- Open plan living and dining
- Guest powder room
- Gourmet kitchen
- Oversized 'entertainers' terrace



LEVEL 33

LEVEL 32

PURCHASERS TAKE NOTE

These floorplans DO NOT FORM PART of the Contract for Sale of any lot within the development. They are INDICATIVE ONLY. The descriptions, layouts and areas set out in this floor plan are subject to change and may not accurately reflect the final design of each unit depicted.



420 PITT STREET
SYDNEY